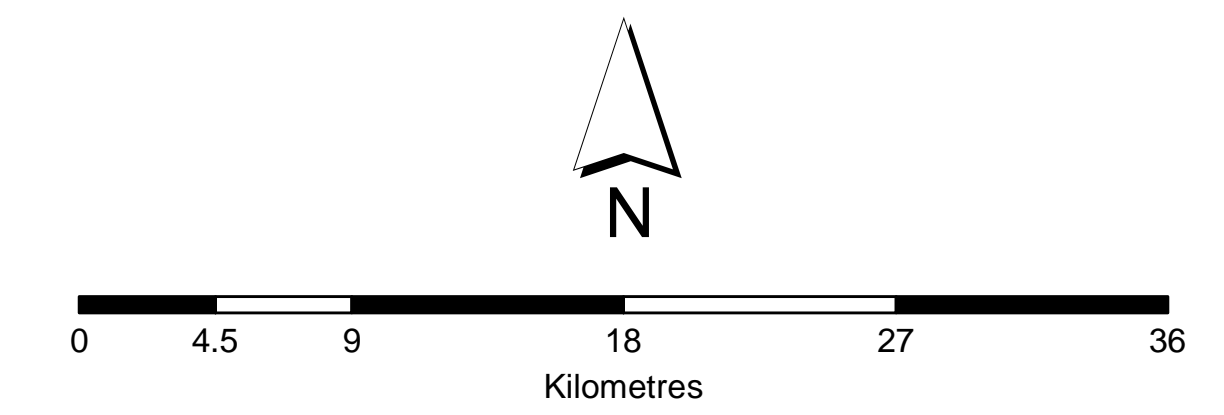


PLAN MAP (WSP003_Version 2)

WATER SHARING PLAN FOR THE HUNTER UNREGULATED AND ALLUVIAL WATER SOURCES 2009



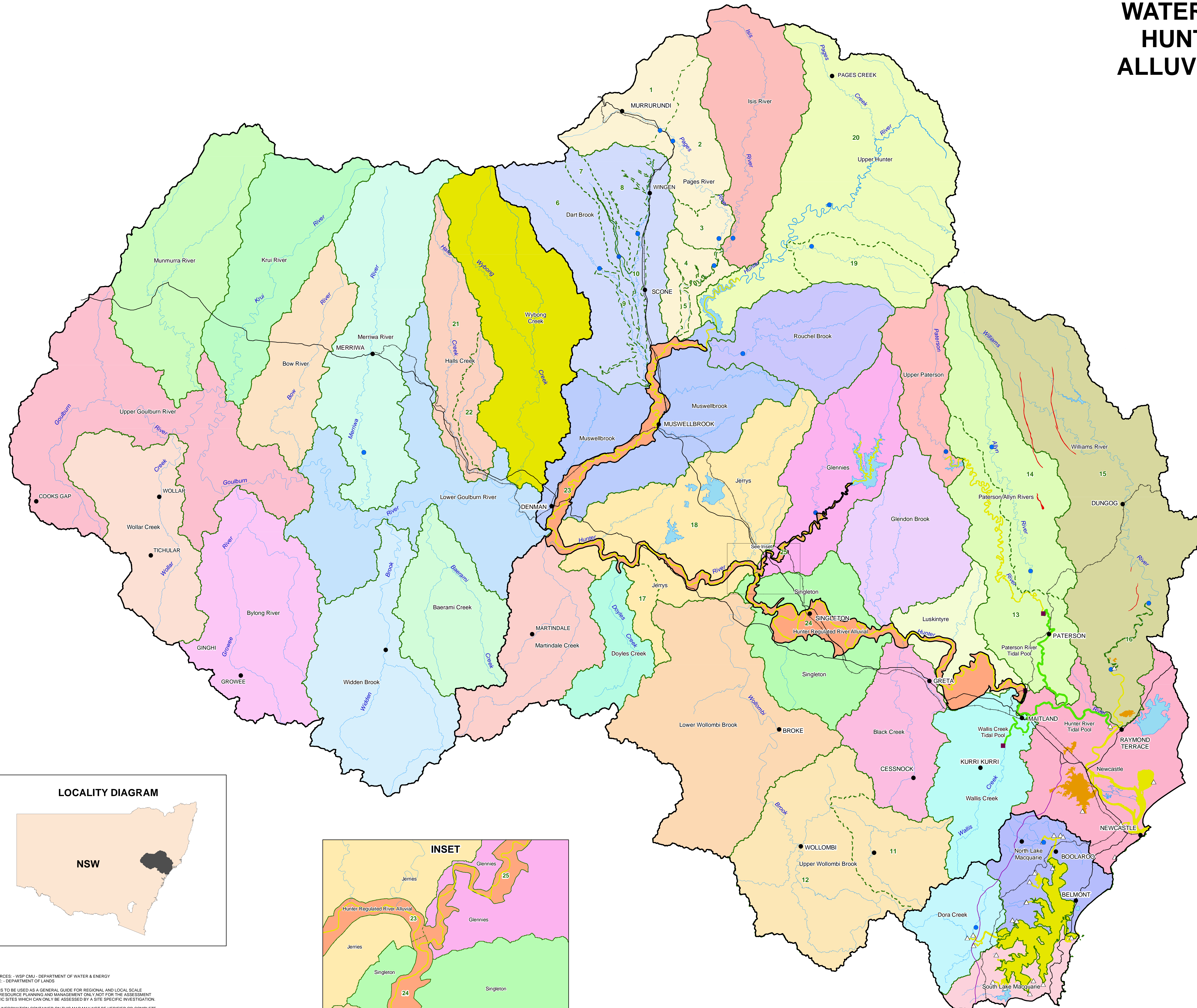
Note: The area covered by the Wybong Creek, Hunter Regulated River and Paterson Regulated River WSPs are exempt from this plan.

MANAGEMENT ZONE LEGEND

- 1: Murrurundi Management Zone
- 2: Scotts Creek Management Zone
- 3: Kewell Creek Management Zone
- 4: Gundy Management Zone
- 5: Segenhoe Management Zone
- 6: Upper Dart Brook Management Zone
- 7: Upper Middle Brook Management Zone
- 8: Petwyn Vale Management Zone
- 9: Lower Dart Brook Management Zone
- 10: Lower Middle Brook and Kingdon Ponds Management Zone
- 11: Congewai Creek Management Zone
- 12: Wollombi Brook Arm Management Zone
- 13: Paterson River Tributaries Management Zone
- 14: Allyn River Management Zone
- 15: Williams River Management Zone
- 16: Seaham Weir Management Zone
- 17: Appletree Flat Management Zone
- 18: Jerrys Management Zone
- 19: Stewarts Brook Management Zone
- 20: Upper Hunter Management Zone
- 21: Halls Creek Management Zone
- 22: Giants Creek Management Zone
- 23: Upstream Glennies Creek Management Zone
- 24: Downstream Glennies Creek Management Zone
- 25: Glennies Creek Management Zone

Legend

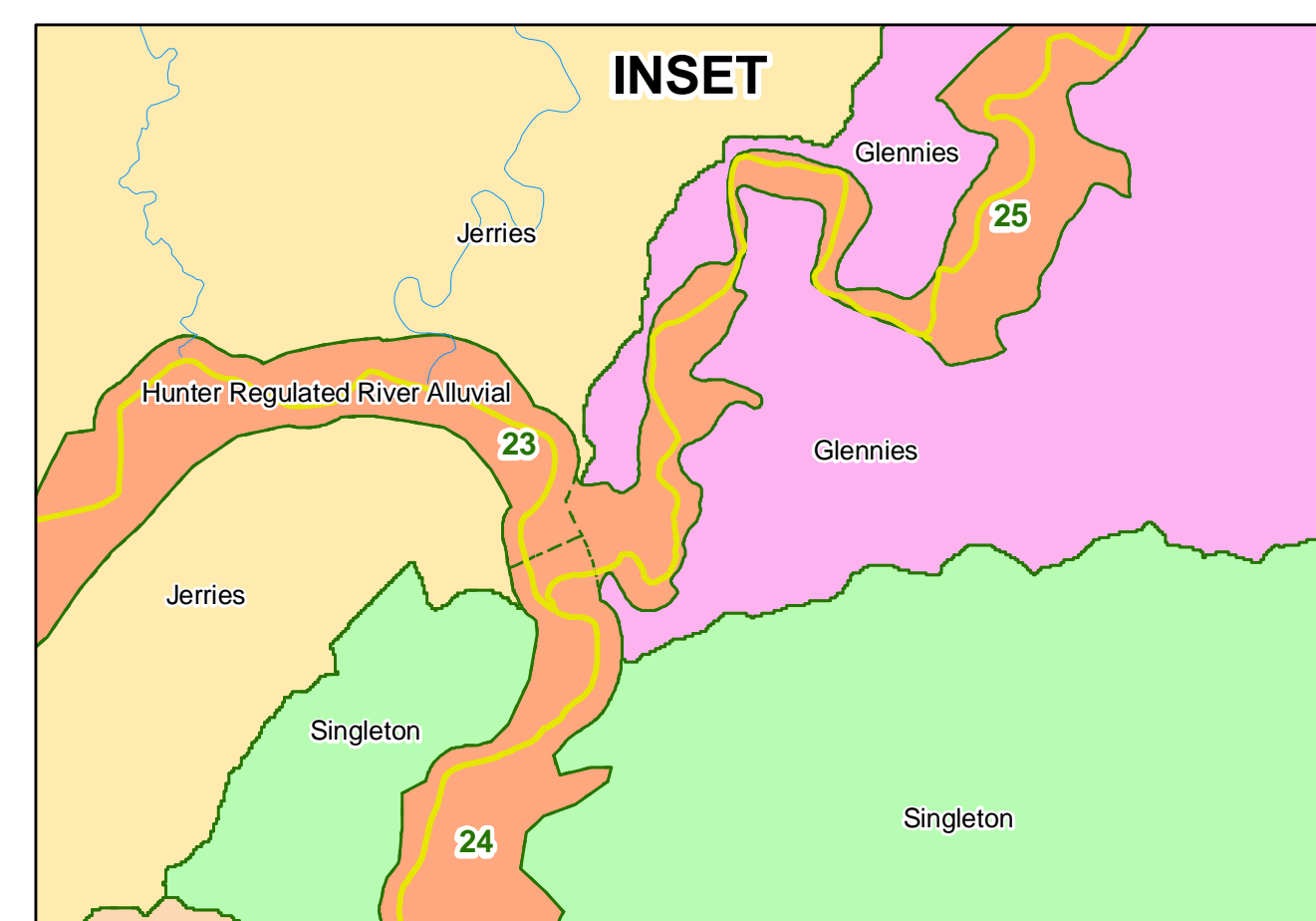
- Towns
 - △ Limit of plan (Downstream excluded from plan)
 - Flow reference point
 - Tidal limit
 - Highway
 - Railway
 - Rivers & Creeks
 - Tidal Pool Water Source
 - Lakes & Dams
 - Extraction Management Unit
 - Management Zones
 - Water Source
 - Exemptions from Macro WSP
 - Karst GDEs
 - Other GDEs
- Note: This only includes GDE's within the upland alluvium



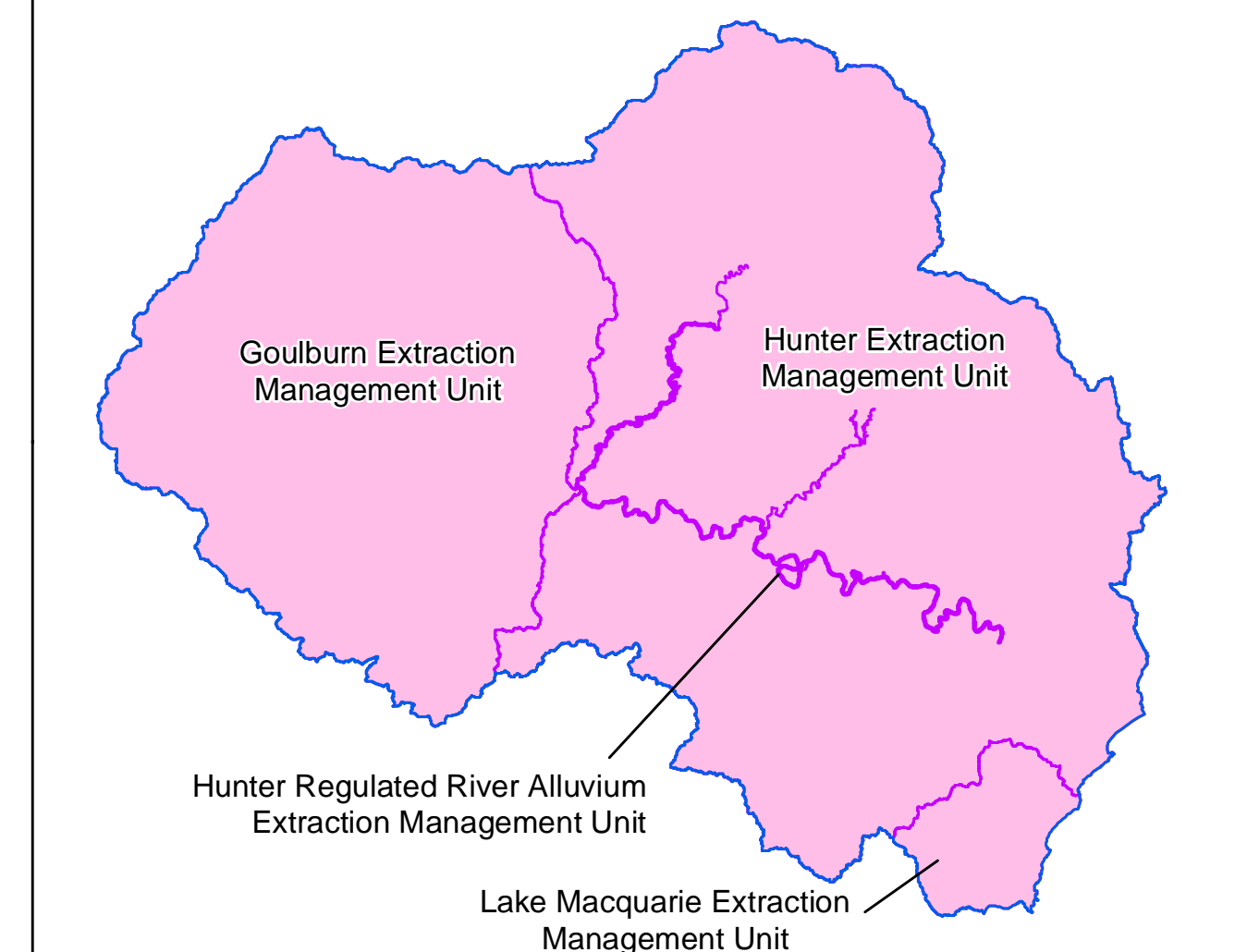
LOCALITY DIAGRAM



INSET



EXTRACTION MANAGEMENT UNIT KEY



DATA SOURCES: - WSP CMU - DEPARTMENT OF WATER & ENERGY
 CASSTRE - DEPARTMENT OF LANDS
 THIS MAP IS TO BE USED AS A GENERAL GUIDE FOR REGIONAL AND LOCAL SCALE
 NATURAL RESOURCE PLANNING AND MANAGEMENT ONLY. NOT FOR THE ASSESSMENT
 OF SPECIFIC SITES WHICH CAN ONLY BE ASSESSED BY A SITE SPECIFIC INVESTIGATION.
 THE FIELD INFORMATION CONTAINED ON THIS MAP MAY NOT BE VERIFIED OR COMPLETE.
 THE DEPARTMENT OF WATER & ENERGY IS NOT RESPONSIBLE FOR THE RESULT OF
 ANY ACTIONS TAKEN ON THE BASIS OF THE INFORMATION CONTAINED ON THIS MAP
 OR FOR ANY ERRORS, OMISSIONS OR INACCURACIES CONTAINED ON THIS MAP.
 W:\AA\WORK\AREAS\2009\OUT\TP\HUNTER\WSP_FinalMap\WSP003_Version2.mxd