



New South Wales

# **Water Sharing Plan for the NSW Murray Darling Basin Fractured Rock Groundwater Sources Amendment Order 2013**

under the

Water Management Act 2000

I, the Minister for Primary Industries, in pursuance of section 45 (1) (a) of the *Water Management Act 2000*, being satisfied it is in the public interest to do so, make the following Order to amend the *Water Sharing Plan for the NSW Murray Darling Basin Fractured Rock Groundwater Sources 2011*.

Dated this Eighth day of February 2013.

**KATRINA HODGKINSON, MP**  
**Minister for Primary Industries**

## **Explanatory note**

This Order is made under section 45 (1) (a) of the *Water Management Act 2000*. The object of this Order is to amend the *Water Sharing Plan for the NSW Murray Darling Basin Fractured Rock Groundwater Sources 2011*. The concurrence of the Minister for the Environment was obtained prior to the making of this Order.

# **Water Sharing Plan for the NSW Murray Darling Basin Fractured Rock Groundwater Sources Amendment Order 2013**

under the

Water Management Act 2000

## **1 Name of Order**

This Order is the *Water Sharing Plan for the NSW Murray Darling Basin Fractured Rock Groundwater Sources Amendment Order 2013*.

## **2 Commencement**

This Order commences on the day on which it is published on the NSW legislation website.

## Schedule 1 Amendment of the Water Sharing Plan for the NSW Murray Darling Basin Fractured Rock Groundwater Sources 2011

### [1] Clause 4 Application of this Plan

Omit clause 4 (2). Insert instead:

- (2) These groundwater sources are shown on the Plan Map called the *Plan Map (WSP012\_Version 2), Water Sharing Plan for the NSW Murray Darling Basin Fractured Rock Groundwater Sources 2011* (hereafter **the Plan Map**) held by the Department.

**Note.** The Plan Map is part of this Plan. An overview of the Plan Map is shown in Appendix 1. Copies of the Plan Map may be inspected at the offices listed in Appendix 2 and are available on the NSW Legislation website.

### [2] Clauses 4, 5 and 54, Schedule 1 and Appendix 2

Omit “Registered Map” wherever occurring. Insert instead “Plan Map”.

### [3] Clause 4 (13) (k) and (l)

Omit the paragraphs. Insert instead:

- (k) the water sources as defined in the *Water Sharing Plan for the Intersecting Streams Unregulated and Alluvial Water Sources 2011*,
- (l) the water sources as defined in the *Water Sharing Plan for the Murray Unregulated and Alluvial Water Sources 2011*,
- (m) the water sources as defined in the *Water Sharing Plan for the NSW Great Artesian Basin Shallow Groundwater Sources 2011*,
- (n) the water sources as defined in the *Water Sharing Plan for the NSW Border Rivers Unregulated and Alluvial Water Sources 2012*,
- (o) the water sources as defined in the *Water Sharing Plan for the Barwon-Darling Unregulated and Alluvial Water Sources 2012*,
- (p) the water sources as defined in the *Water Sharing Plan for the Gwydir Unregulated and Alluvial Water Sources 2012*,
- (q) the water sources as defined in the *Water Sharing Plan for the Lachlan Unregulated and Alluvial Water Sources 2012*,
- (r) the water sources as defined in the *Water Sharing Plan for the Macquarie Bogan Unregulated and Alluvial Water Sources 2012*,
- (s) the water sources as defined in the *Water Sharing Plan for the Murrumbidgee Unregulated and Alluvial Water Sources 2012*, or
- (t) the water sources as defined in the *Water Sharing Plan for the Namoi Unregulated and Alluvial Water Sources 2012*.

### [4] Clause 16 Establishment and maintenance of planned environmental water

Omit “50,487” from note 1 to clause 16 (2) (a) (i). Insert instead “43,364”.

### [5] Clause 16 (2) (a) (iii)

Omit “297,624” and “23,612” from the note to the subparagraph.

Insert instead “202,540” and “7,165”, respectively.

**[6] Clause 16 (2) (a) (iv)**

Omit “3,285,002” and “189,363” from the note to the subparagraph.

Insert instead “3,502,609” and “224,627”, respectively.

**[7] Clause 22**

Omit the clause. Insert instead:

**Clause 22 Share components of aquifer access licences**

It is estimated that the share components of aquifer access licences authorised to take water from these groundwater sources total 98,775 unit shares, distributed as follows:

- (a) 2,148 unit shares in the Adelaide Fold Belt MDB Groundwater Source,
- (b) 3,023 unit shares in the Inverell Basalt Groundwater Source,
- (c) 5 unit shares in the Kanmantoo Fold Belt MDB Groundwater Source,
- (d) 69,248 unit shares in the Lachlan Fold Belt MDB Groundwater Source,
- (e) 334 unit shares in the Liverpool Ranges Basalt MDB Groundwater Source,
- (f) 7,005 unit shares in the New England Fold Belt MDB Groundwater Source,
- (g) 7,760 unit shares in the Orange Basalt Groundwater Source,
- (h) 11 unit shares in the Warrumbungle Basalt Groundwater Source,
- (i) 2,925 unit shares in the Yass Catchment Groundwater Source, and
- (j) 6,316 unit shares in the Young Granite Groundwater Source.

**[8] Clause 25 Volume of the long-term extraction limits**

Omit “30,292” from clause 25 (2) (a). Insert instead “26,018”.

**[9] Clause 25 (2) (c)**

Omit “178,575”. Insert instead “121,524”.

**[10] Clause 25 (2) (d)**

Omit “821,250”. Insert instead “875,652”.

**[11] Dictionary**

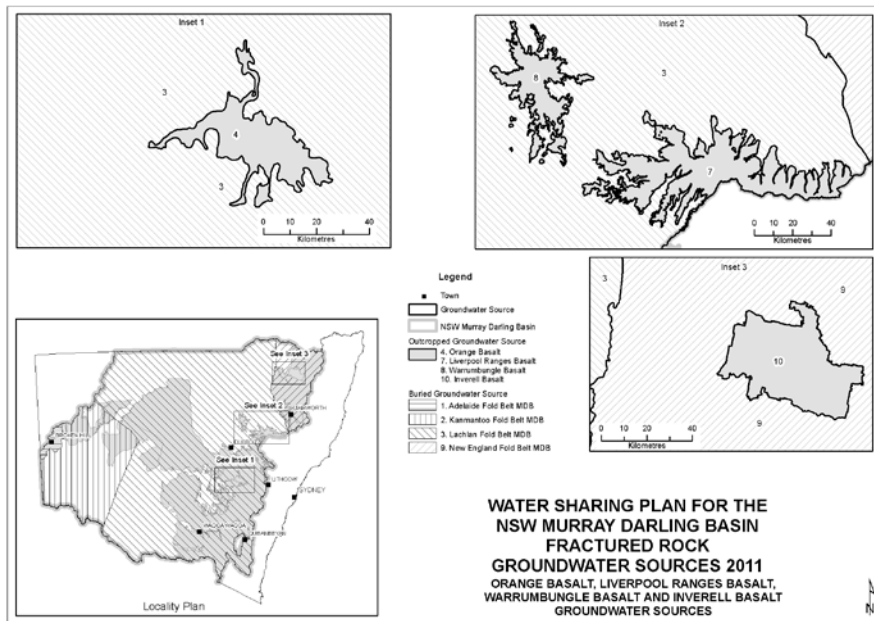
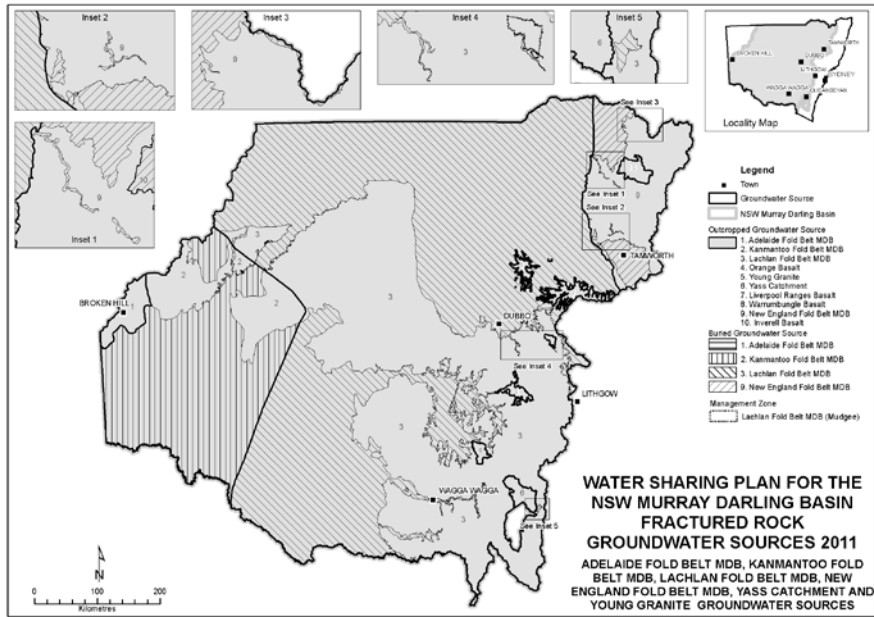
Omit “Registered Map” wherever occurring. Insert instead “Plan Map”.

**[12] Appendix 1**

Omit the appendix. Insert instead:

**Appendix 1 Overview of the Plan Map**

**Overview of the Plan Map (WSP012\_Version 2), Water Sharing Plan for the NSW Murray Darling Basin Fractured Rock Groundwater Sources 2011**



[13] Appendix 3 Groundwater Dependent Ecosystems in the NSW Murray Darling Basin Fractured Rock Groundwater Sources

Omit the maps. Insert instead:

